

# MILITARY SERIES POWER INVERTER SPECIFICATIONS

NSN 6130-01-492-3067

CAGE CODE 00MC3

The 3 phase inverter consists of 3 Master Modules which generate 1000 Watts of power for each phase and the control signals to drive an extra power module on each phase for a total power of 6000 Watts or 2000 Watts per phase. The system also may include an alarm card which provides the status of the inverter system.

## Features:

- 6KW 3 Phase 208Vac
- The Alarm Card displays: Inverter ON, Inverter Fail, High Temperature, Low DC Voltage.
- Compact, Lightweight, Only 55 Pounds



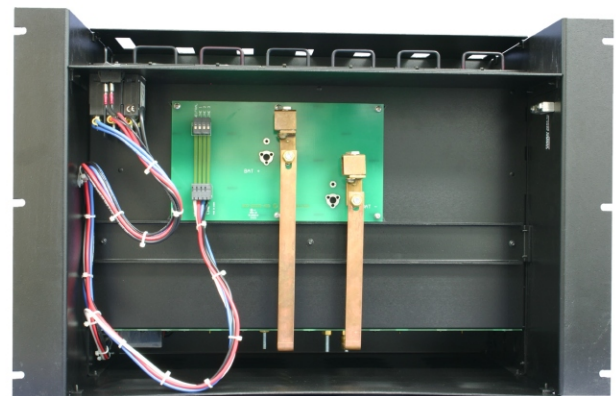
Front View



Front View without Front Cover



Rear View



Bottom View  
Customer Connections

Give us the opportunity to help solve your power problem.



# MILITARY SERIES POWER INVERTERS

## OUTPUT POWER

CONTINUOUS POWER	SURGE POWER (3 seconds)	NO LOAD POWER	OUTPUT VOLTAGE	OUTPUT CURRENT	WEIGHT LBS.
6000W	13,200W	120W	117/208 +/-6%	51.6	55

2KW per PHASE

## INPUT

MODEL VOLTAGE	MINIMUM (TYPICAL)	SYSTEM (TYPICAL)	MAXIMUM (TYPICAL)	TYPICAL EFFICIENCY @ FULL POWER	PEAK EFFICIENCY @ 1/3 POWER
24V	19/21V*	27.6V	34V	87%	89%

\*indicates typical cut-off voltage/warning buzzer voltage

## GENERAL

CONDITIONS	MINIMUM	TYPICAL	MAXIMUM
WAVEFORM	-	SINUSOIDAL	-
LINE REGULATION	-	.1%	.5%
LOAD REGULATION	-	.3%	.5%
DISTORTION	-	1.5%	2%
FREQUENCY*	-.1%	NOMINAL	+.1%

50, 60, 400Hz nominal

See [www.exeltech.com](http://www.exeltech.com) for more data regarding MX Series inverters.

## PROTECTION CIRCUITRY

Over Voltage: Shutoff at maximum input voltage, per input conditions.  
 Under Voltage: Shutoff at minimum input voltage, per input conditions.  
 Thermal: 105 C internal temperature. Warning buzz 5 C before shutoff.  
 Output Short: Unit shuts off: electronically limited.

## ENVIRONMENTAL

Temperature: -25 to 40 C full power, derate 20% per 10 C. Above 25 C.  
 Humidity: 5 to 95% non-condensing  
 Audible Noise: Less than 45dbA  
 Cooling: Thermostatically controlled variable speed forced air  
 Finish: Polyurethane base paint  
 Warranty: Full year parts and labor.

## MECHANICAL

Case size available:  
7" high X 15" deep.

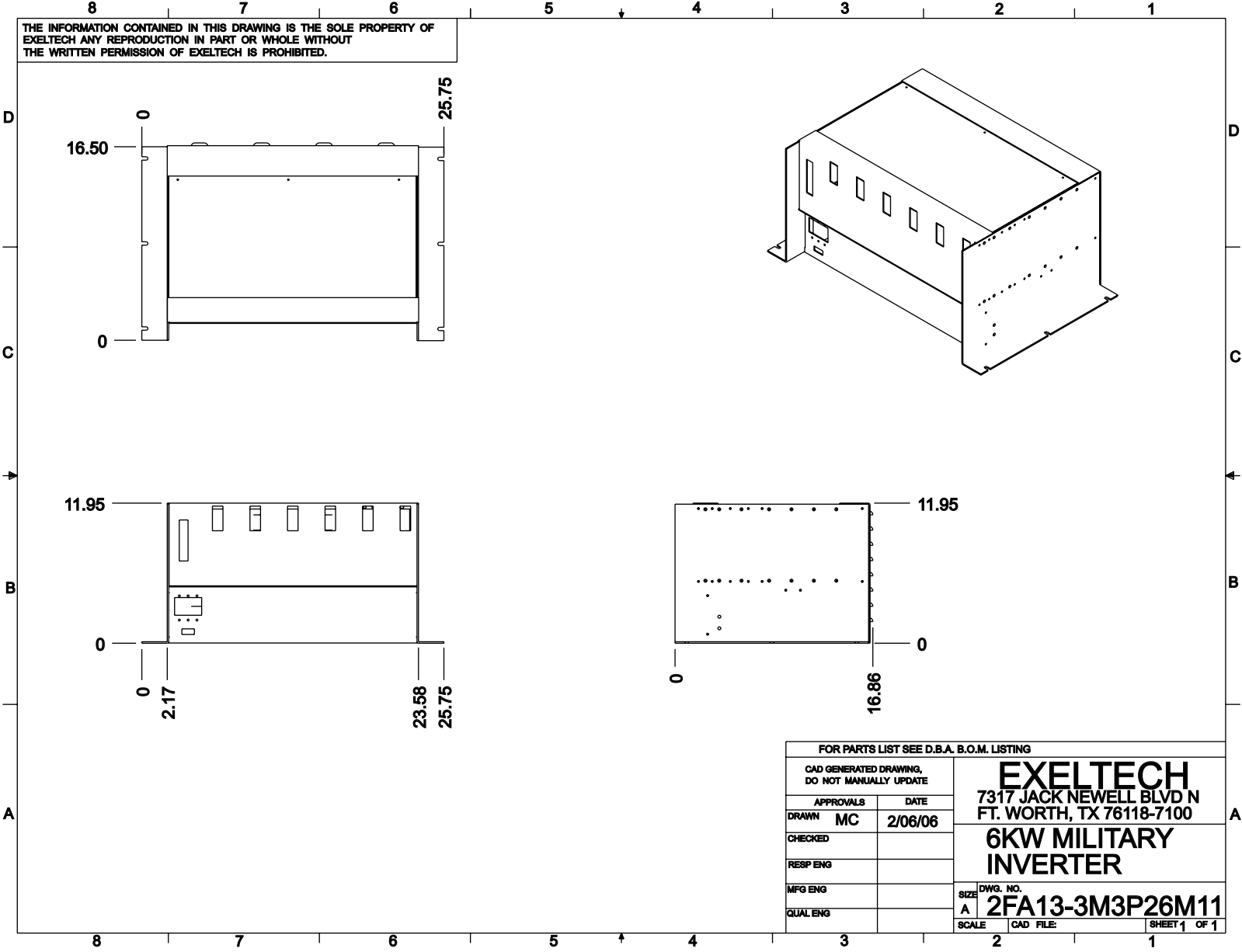
23 inch Wide: (includes hardware for rack or shelf mounting)

Weight: 55 lbs.

**EXELTECH**

7317 Jack Newell Blvd North  
 Fort Worth, Texas 76118-7100  
 817.595.4969 voice, 817.595.1290 fax  
 800.886.4683 toll free  
 website [www.exeltech.com](http://www.exeltech.com)

THE INFORMATION CONTAINED IN THIS DRAWING IS THE SOLE PROPERTY OF EXELTECH ANY REPRODUCTION IN PART OR WHOLE WITHOUT THE WRITTEN PERMISSION OF EXELTECH IS PROHIBITED.



FOR PARTS LIST SEE D.B.A. B.O.M. LISTING			
CAD GENERATED DRAWING, DO NOT MANUALLY UPDATE		<b>EXELTECH</b> 7317 JACK NEWELL BLVD N FT. WORTH, TX 76118-7100	
APPROVALS	DATE		
DRAWN MC	2/06/06	<b>6KW MILITARY INVERTER</b>	
CHECKED			
RESP ENG		DWG. NO. <b>2FA13-3M3P26M11</b>	
MFG ENG			
QUAL ENG		SCALE	CAD FILE:
			SHEET 1 OF 1