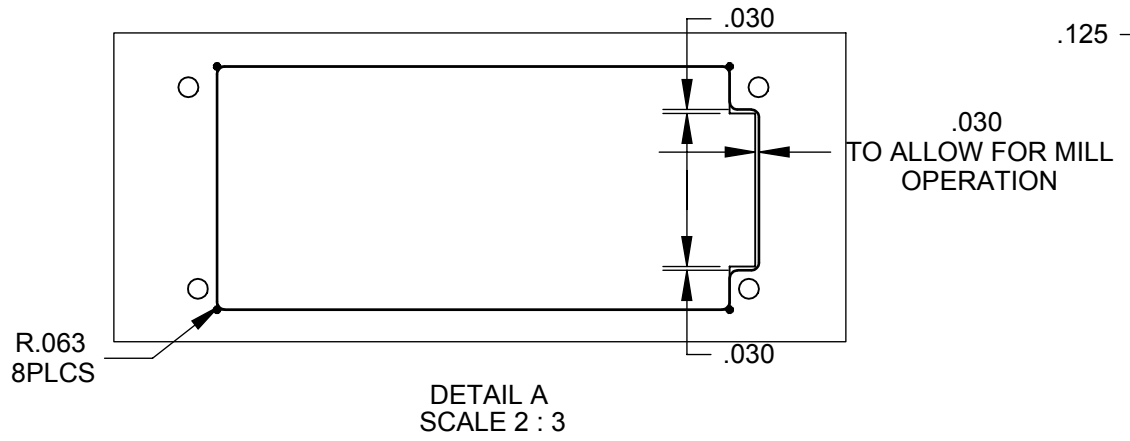
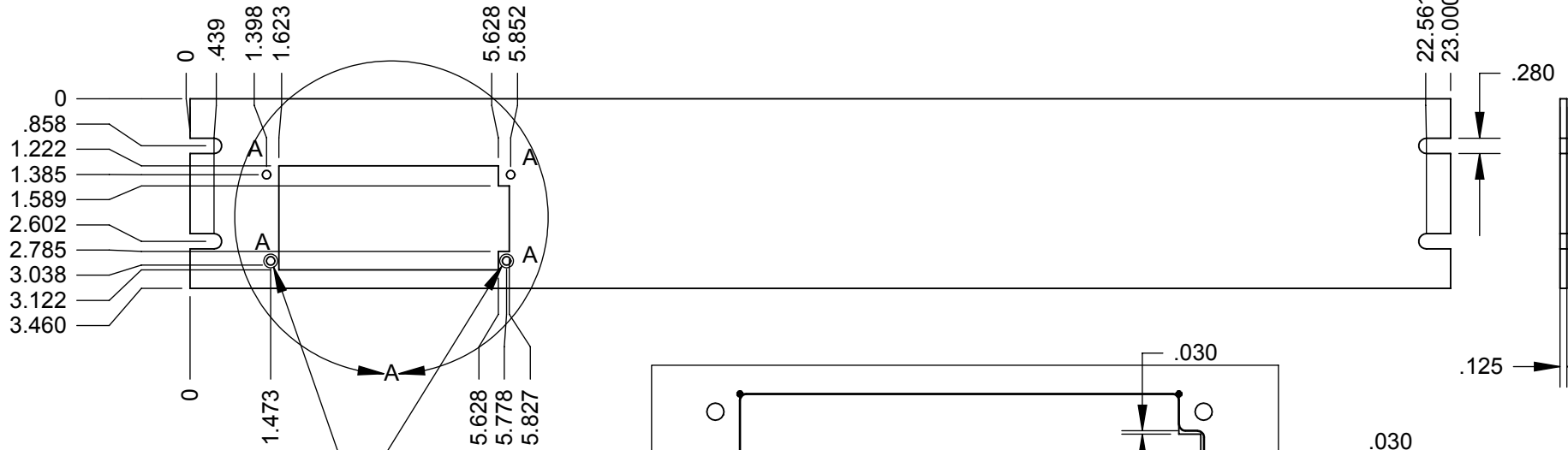


THE INFORMATION CONTAINED IN THIS DRAWING IS THE SOLE PROPERTY OF EXELTECH ANY REPRODUCTION IN PART OR WHOLE WITHOUT THE WRITTEN PERMISSION OF EXELTECH IS PROHIBITED.

REVISIONS

REV.	DESCRIPTION	DATE
1	Added notch to side of cut-out to allow clearance for ground lug.	1/6/2006
2	UPDATE GROUND REQS	5/21/18



NOTE:
 POWDER COAT ALL
 SHERWIN WILLIAMS
 LC20008 BLACK TEXT
 PBT2-70063-C50

 NO POWDER COAT ON
 BACK OF FACE PLATE TO
 MAINTAIN ELECTRICAL
 GROUNDING REQUIREMENT

HOLES	DESCRIPTION	QTY.
A	Ø .156	4

UNLESS OTHERWISE SPECIFIED DIMENSIONS ARE IN INCHES TOLERANCES ARE: DECIMALS: .XXX +/- .010 .XX +/- .020 FRACTIONS: +/- 1/32 ANGLES: +/- 1		FOR PARTS LIST SEE D.B.A. B.O.M. LISTING	
MATERIAL .125" 5052-H32		CAD GENERATED DRAWING, DO NOT MANUALLY UPDATE	
FINISH SEE NOTE		APPROVALS	DATE
DO NOT SCALE DRAWING		DRAWN JG	11/4/98
		CHECKED	
		RESP ENG	
		MFG ENG	
		QUAL ENG	
SIZE A	DWG. NO. 020-00137-402		
SCALE	CAD FILE:	SHEET OF	

EXELTECH
 7317 JACK NEWELL BLVD N
 FT. WORTH, TX 76118-7100
**23" XP125 1 PLATE
 FOR RACK MNT.**