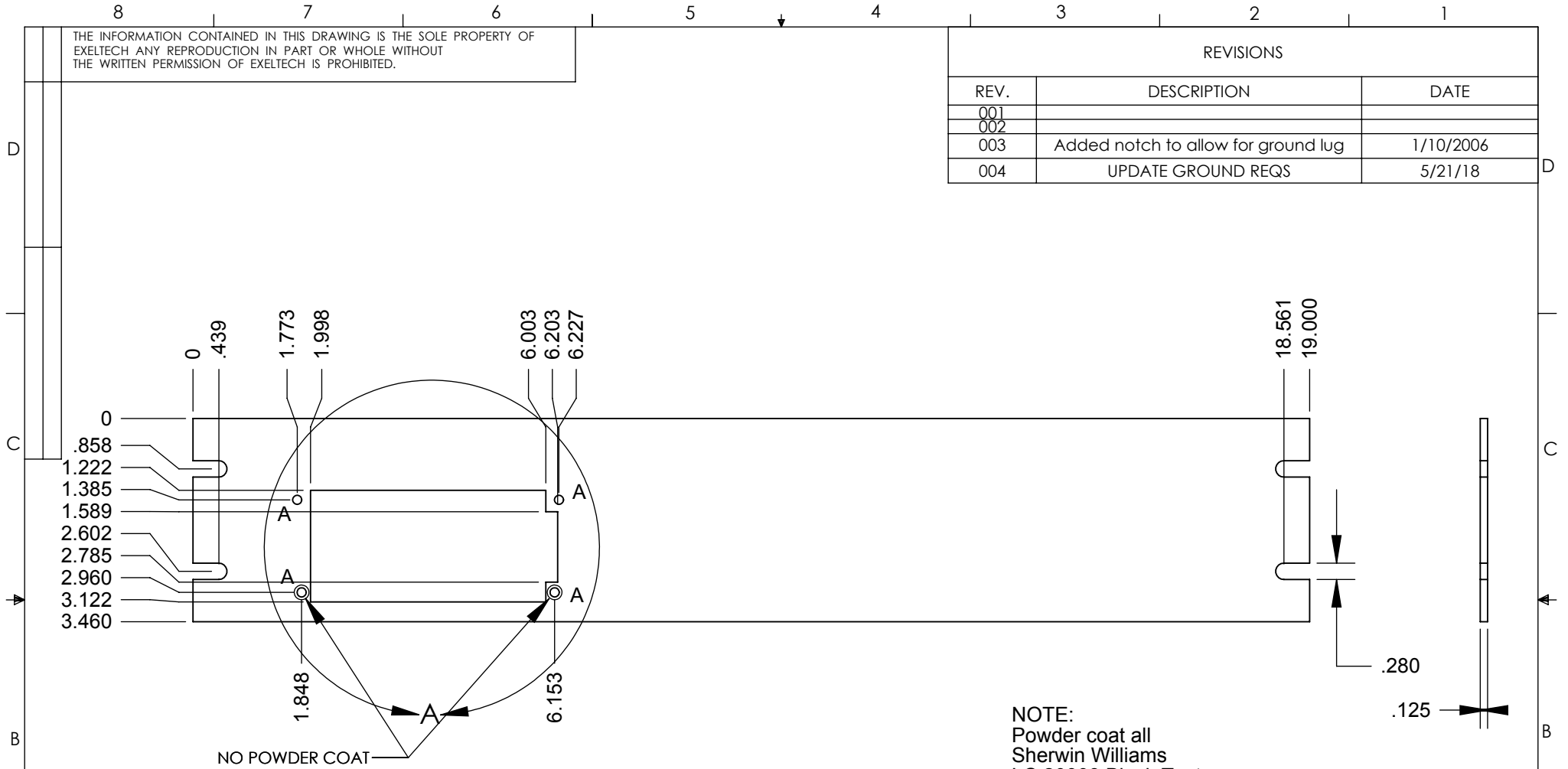


THE INFORMATION CONTAINED IN THIS DRAWING IS THE SOLE PROPERTY OF EXELTECH ANY REPRODUCTION IN PART OR WHOLE WITHOUT THE WRITTEN PERMISSION OF EXELTECH IS PROHIBITED.

REVISIONS

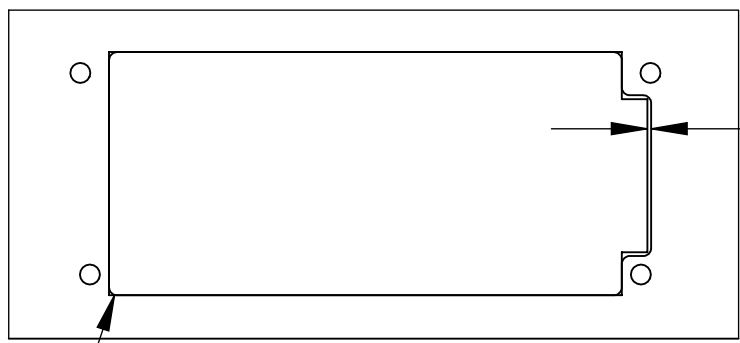
REV.	DESCRIPTION	DATE
001		
002		
003	Added notch to allow for ground lug	1/10/2006
004	UPDATE GROUND REQS	5/21/18



NOTE:
 Powder coat all
 Sherwin Williams
 LC 20008 Black Text
 PBT2-70063-C50

NO POWDER COAT ON
 BACK OF FACE PLATE TO
 MAINTAIN ELECTRICAL
 GROUNDING REQUIREMENT

.030
 TO ALLOW FOR
 MILL OPERATION



DETAIL A
 SCALE 1 : 1.5

R.063
 8PLCS

TAG	SIZE	QUANTITY
A	Ø .156 THRU	4

UNLESS OTHERWISE SPECIFIED DIMENSIONS ARE IN INCHES TOLERANCES ARE: FRACTIONS DECIMALS ANGLES +1/32 .XX+/- .020 .XX X +/- .010		CAD GENERATED DRAWING, DO NOT MANUALLY UPDATE		EXELTECH	
MATERIAL .125" AL.		APPROVALS	DATE		
FINISH SEE NOTE		DRAWN M. C ARNES	12/01/98	FTPLT 19" XP125 SINGLE	
DO NOT SCALE DRAWING		CHECKED		SIZE A	DWG. NO. 020-00138-404
		RESP ENG		SCALE	CAD FILE:
		MFG ENG		SHEET 1 OF 1	
		QUAL ENG			